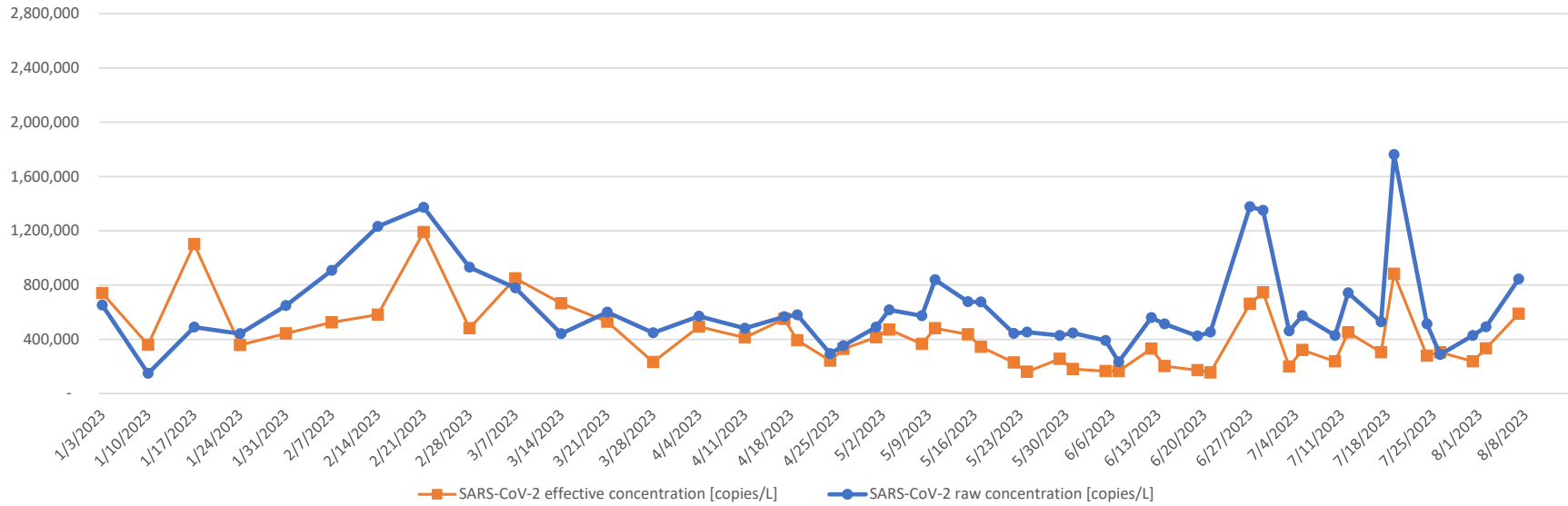


2023 Biobot Analytics-Carmel Area WD (CA)-Facility Influent



Effective virus concentration value is derived by adjusting the raw virus concentration to account for dilution and other factors.

Location	Date	Kit	SARS-CoV-2			Detection status	Analysis version	Protocols version(s)	Catchment population [people]
			SARS-CoV-2 raw concentration [copies/L]	effective concentration n [copies/L]	PMMoV raw concentration [copies/L]				
Carmel Area WD (CA) - Facility Influent	8/7/2023	KIT-BF409	843,366	588,488	136,571,135	quantifiable	v3.1	v5.0	15000
Carmel Area WD (CA) - Facility Influent	8/2/2023	KIT-BF410	491,080	332,219	140,866,666	quantifiable	v3.1	v5.0	15000
Carmel Area WD (CA) - Facility Influent	7/31/2023	KIT-BF408	428,154	237,146	172,054,323	quantifiable	v3.1	v5.0	15000
Carmel Area WD (CA) - Facility Influent	7/26/2023	KIT-BC590	287,437	303,295	90,314,603	quantifiable	v3.1	v5.0	15000
Carmel Area WD (CA) - Facility Influent	7/24/2023	KIT-BC587	513,649	278,722	175,621,073	quantifiable	v3.1	v5.0	15000
Carmel Area WD (CA) - Facility Influent	7/19/2023	KIT-BC372	1,761,342	881,432	190,430,147	quantifiable	v3.1	v5.0	15000
Carmel Area WD (CA) - Facility Influent	7/17/2023	KIT-BC379	527,948	303,174	165,951,002	quantifiable	v3.1	v5.0	15000
Carmel Area WD (CA) - Facility Influent	7/12/2023	KIT-BC586	741,526	450,919	156,714,293	quantifiable	v3.1	v5.0	15000
Carmel Area WD (CA) - Facility Influent	7/10/2023	KIT-BC589	428,144	237,729	171,627,615	quantifiable	v3.1	v5.0	15000
Carmel Area WD (CA) - Facility Influent	7/5/2023	KIT-BC378	572,322	320,458	170,196,100	quantifiable	v3.1	v5.0	15000
Carmel Area WD (CA) - Facility Influent	7/3/2023	KIT-BC371	460,460	197,908	221,722,363	quantifiable	v3.1	v5.0	15000
Carmel Area WD (CA) - Facility Influent	6/29/2023	KIT-AY128	1,350,481	744,394	172,888,515	quantifiable	v3.1	v5.0	15000
Carmel Area WD (CA) - Facility Influent	6/27/2023	KIT-AY126	1,376,423	660,929	198,462,362	quantifiable	v3.1	v5.0	15000
Carmel Area WD (CA) - Facility Influent	6/21/2023	KIT-AY123	452,119	155,529	277,027,081	quantifiable	v3.1	v4.3.1	15000
Carmel Area WD (CA) - Facility Influent	6/19/2023	KIT-AY127	424,458	171,449	235,928,988	quantifiable	v3.1	v4.3.1	15000
Carmel Area WD (CA) - Facility Influent	6/14/2023	KIT-AY129	512,745	201,577	242,404,738	quantifiable	v3.1	v4.3.1	15000
Carmel Area WD (CA) - Facility Influent	6/12/2023	KIT-AY125	559,231	330,420	161,289,207	quantifiable	v3.1	v4.3.1	15000

<u>Location</u>	<u>Date</u>	<u>Kit</u>	<u>SARS-CoV-2</u>			<u>Detection status</u>	<u>Analysis version</u>	<u>Protocols version(s)</u>	<u>Catchment population</u>
			<u>SARS-CoV-2 raw concentration</u>	<u>effective concentration</u>	<u>PMMoV raw concentration</u>				
			<u>[copies/L]</u>	<u>n [copies/L]</u>	<u>[copies/L]</u>				
Carmel Area WD (CA) - Facility Influent	6/7/2023	KIT-AY124	234,274	164,422	135,782,802	quantifiable	v3.1	v4.3.1	15000
Carmel Area WD (CA) - Facility Influent	6/5/2023	KIT-AY130	390,180	165,107	225,205,688	quantifiable	v3.1	v4.3.1	15000
Carmel Area WD (CA) - Facility Influent	5/31/2023	KIT-AU928	445,597	179,577	236,467,524	quantifiable	v3.1	v4.3.1	15000
Carmel Area WD (CA) - Facility Influent	5/29/2023	KIT-AU981	426,954	255,618	159,173,388	quantifiable	v3.1	v4.3.1	15000
Carmel Area WD (CA) - Facility Influent	5/24/2023	KIT-AU929	452,417	159,566	270,196,674	quantifiable	v3.1	v4.3.1	15000
Carmel Area WD (CA) - Facility Influent	5/22/2023	KIT-AU926	443,076	228,368	184,894,081	quantifiable	v3.1	v4.3.1	15000
Carmel Area WD (CA) - Facility Influent	5/17/2023	KIT-AU982	674,946	343,865	187,051,973	quantifiable	v3.1	v4.3.1	15000
Carmel Area WD (CA) - Facility Influent	5/15/2023	KIT-AU927	676,881	436,735	147,698,073	quantifiable	v3.1	v4.3.1	15000
Carmel Area WD (CA) - Facility Influent	5/10/2023	KIT-AU983	839,173	480,665	166,375,632	quantifiable	v3.1	v4.3.1	15000
Carmel Area WD (CA) - Facility Influent	5/8/2023	KIT-AU930	573,134	365,583	149,399,880	quantifiable	v3.1	v4.3.1	15000
Carmel Area WD (CA) - Facility Influent	5/3/2023	KIT-AM252	616,226	471,230	124,620,079	quantifiable	v3.1	v4.3.1	15000
Carmel Area WD (CA) - Facility Influent	5/1/2023	KIT-AM255	489,005	414,259	112,492,044	quantifiable	v3.1	v4.3.1	15000
Carmel Area WD (CA) - Facility Influent	4/26/2023	KIT-AM254	351,890	329,321	101,828,102	quantifiable	v3.1	v4.3	15000
Carmel Area WD (CA) - Facility Influent	4/24/2023	KIT-AM347	294,097	241,338	116,130,555	quantifiable	v3.1	v4.3	15000
Carmel Area WD (CA) - Facility Influent	4/19/2023	KIT-AM391	579,452	392,972	140,519,553	quantifiable	v3.1	v4.2.2	15000
Carmel Area WD (CA) - Facility Influent	4/17/2023	KIT-AM088	565,732	550,287	97,971,892	quantifiable	v3.1	v4.2.2	15000
Carmel Area WD (CA) - Facility Influent	4/11/2023	KIT-AM389	480,851	412,667	111,043,089	quantifiable	v3.1	v4.2.2	15000
Carmel Area WD (CA) - Facility Influent	4/4/2023	KIT-AM390	569,274	493,139	110,010,122	quantifiable	v3.1	v4.2.2	15000
Carmel Area WD (CA) - Facility Influent	3/28/2023	KIT-AL324	447,477	232,132	183,703,161	quantifiable	v3.1	v4.2.2	15000
Carmel Area WD (CA) - Facility Influent	3/21/2023	KIT-AL323	599,228	529,372	107,872,777	quantifiable	v3.1	v4.2.2	15000
Carmel Area WD (CA) - Facility Influent	3/14/2023	KIT-AL333	440,461	664,885	63,130,784	quantifiable	v3.1	v4.2.2	15000
Carmel Area WD (CA) - Facility Influent	3/7/2023	KIT-AG072	777,847	848,091	87,404,180	quantifiable	v3.1	v4.2.2	15000
Carmel Area WD (CA) - Facility Influent	2/28/2023	KIT-AG071	931,289	480,572	184,674,550	quantifiable	v3.1	v4.2.2	15000
Carmel Area WD (CA) - Facility Influent	2/21/2023	KIT-AG065	1,371,688	1,189,763	109,869,119	quantifiable	v3.1	v4.2.2	15000
Carmel Area WD (CA) - Facility Influent	2/14/2023	KIT-AD377	1,230,981	581,431	201,759,355	quantifiable	v3.1	v4.2.2	15000
Carmel Area WD (CA) - Facility Influent	2/7/2023	KIT-AD356	907,747	524,976	164,780,792	quantifiable	v3.1	v4.2.2	15000
Carmel Area WD (CA) - Facility Influent	1/31/2023	KIT-AD365	648,257	442,685	139,550,898	quantifiable	v3.1	v4.2.2	15000
Carmel Area WD (CA) - Facility Influent	1/24/2023	KIT-C1843	441,639	358,060	117,541,558	quantifiable	v3.1	v4.2.1	15000
Carmel Area WD (CA) - Facility Influent	1/17/2023	KIT-C1842	489,475	1,101,429	42,350,140	quantifiable	v3.1	v4.2.1	15000
Carmel Area WD (CA) - Facility Influent	1/10/2023	KIT-C1835	148,022	359,562	39,231,301	quantifiable	v3.1	v4.2.1	15000
Carmel Area WD (CA) - Facility Influent	1/3/2023	KIT-ZZ936	650,903	739,902	83,834,556	quantifiable	v3.1	v4.2.1	15000