



Carmel Area Wastewater District Carmel Meadows Sewer Improvements

Critical Infrastructure Renewal, Investing in the Future of Carmel



What is CAWD Doing?



1. Interim Repairs

- a. Conducting interim repairs to existing infrastructure to promptly address Regional Board Violation Notice*

2. Working on Long-Term Improvements Plans:

- a. Eliminating need for Ejector Stations
- b. Mitigating concerns of a pump station adjacent to homes through good design.

*Note that repairing immediate failure modes doesn't address long-term reliability issues.

Interim Repairs

Responding to Regional Board Violation

- Taking Action to repair infrastructure (exempt repairs).
- Repairs must be completed by July 2026 to mitigate fines from the Regional Board



Sewage Flowing Out of Manhole



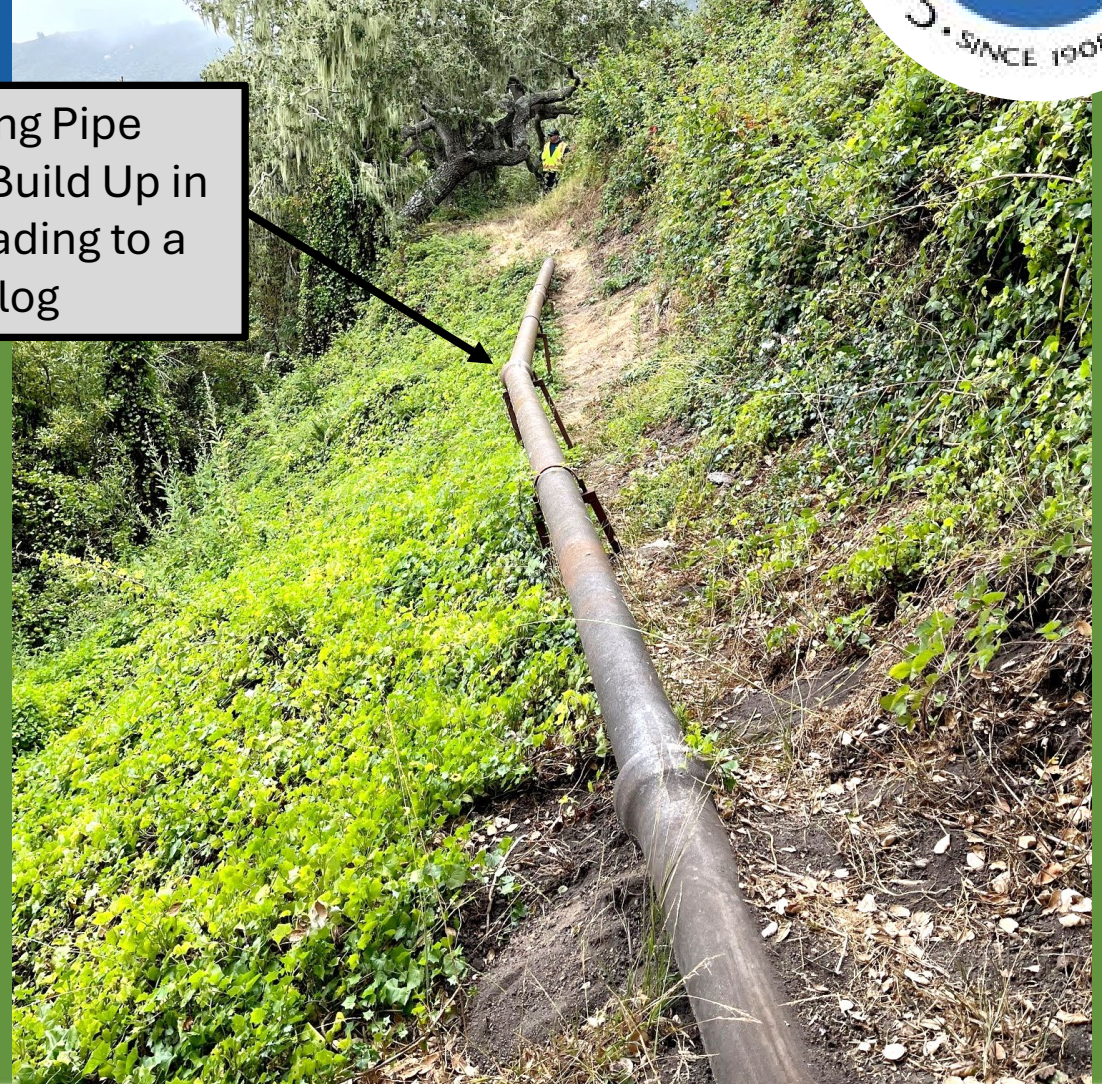
August 5th, 2024
Sewage Spill (22,681 gallons)

Interim Repairs

Responding to Regional Board Violation



Sagging Pipe
Caused Build Up in
Pipe Leading to a
Clog



Interim Repairs

Responding to Regional Board Violation



Pipe Burst with new Pipe
(Completed December 2025)

Repair Sagging Pipe
(Upcoming in Spring 2026)

Manhole Repairs in Multiple Locations
(Upcoming in Spring 2026)

Repairs to be completed prior to July 2026

Interim Repairs

Additional Spot Repairs Behind Houses



Questions about Interim Repairs?



Long-Term Improvements

Eliminating need for Ejector Stations

- “Piping Reconfiguration”

Mitigating concerns of a pump station adjacent to homes through good design

- “Pump Station Design”

Long-Term Improvements

Eliminating need for Ejector Stations



Long-Term Improvements

Eliminating need for Ejector Stations



New Pipe Installed by Pilot Tube Boring

Long-Term Improvements Eliminating need for Ejector Stations



FINAL CONFIGURATION
AFTER PROJECT

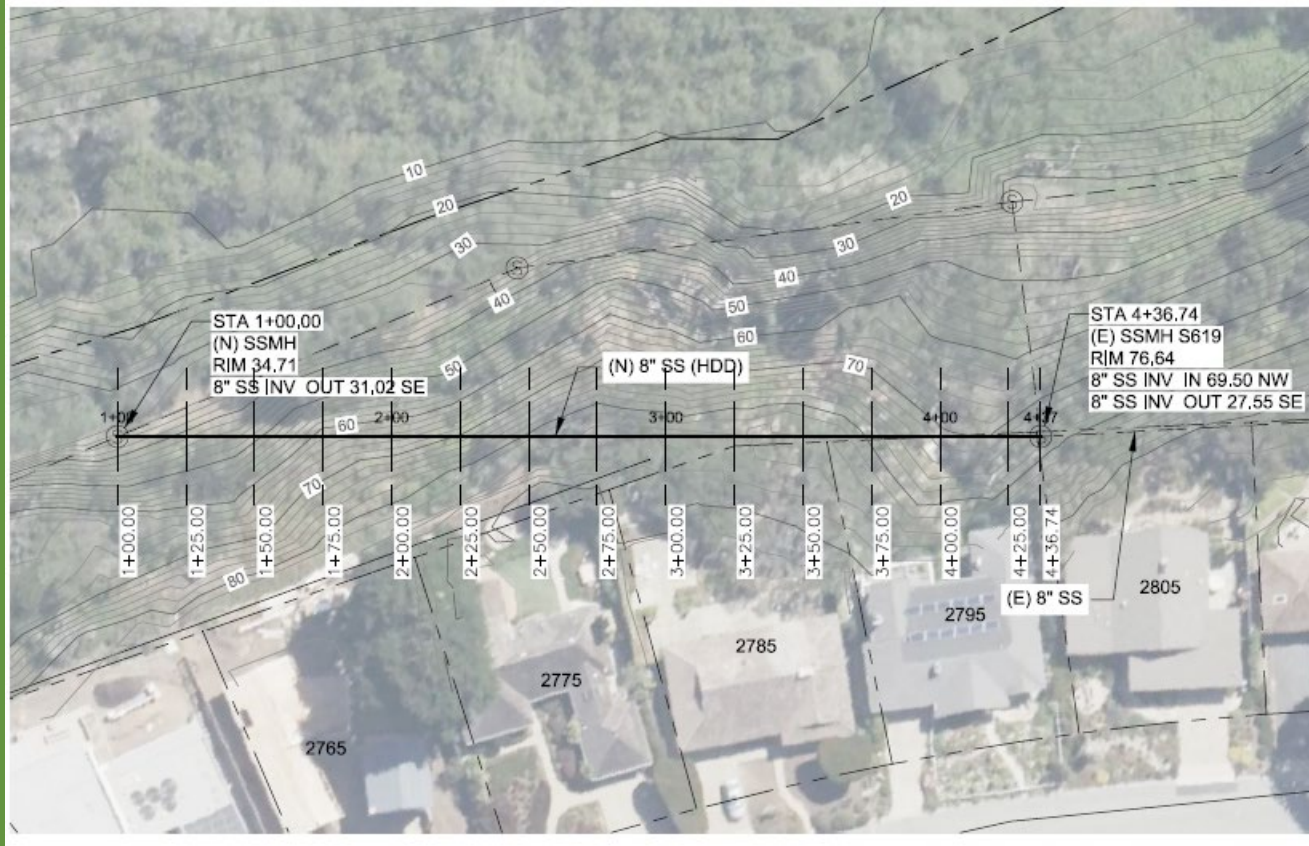
Long-Term Improvements

Eliminating need for Ejector Stations

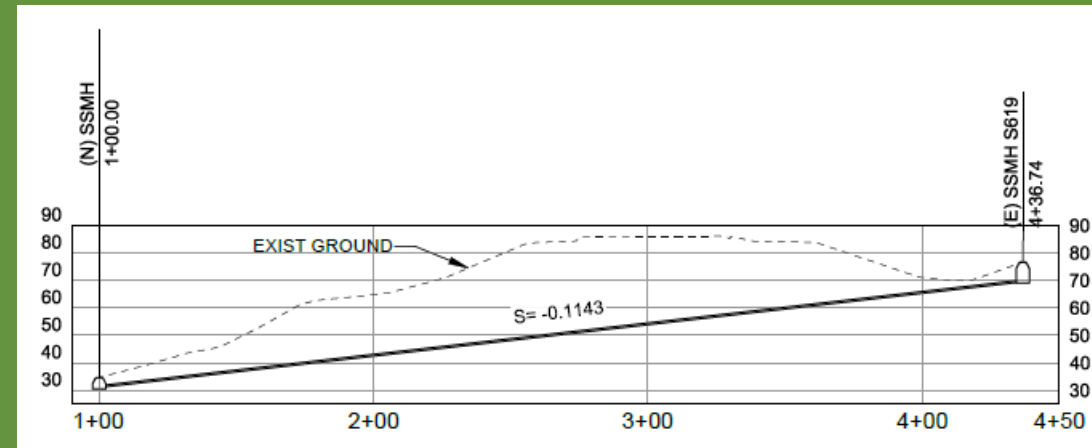


PILOT TUBE BORING

Long-Term Improvements Eliminating need for Ejector Stations



PILOT TUBE BORING PATH



Existing Piping Configuration

Existing
Sewer
Manhole

Existing
Sewer
Pipe

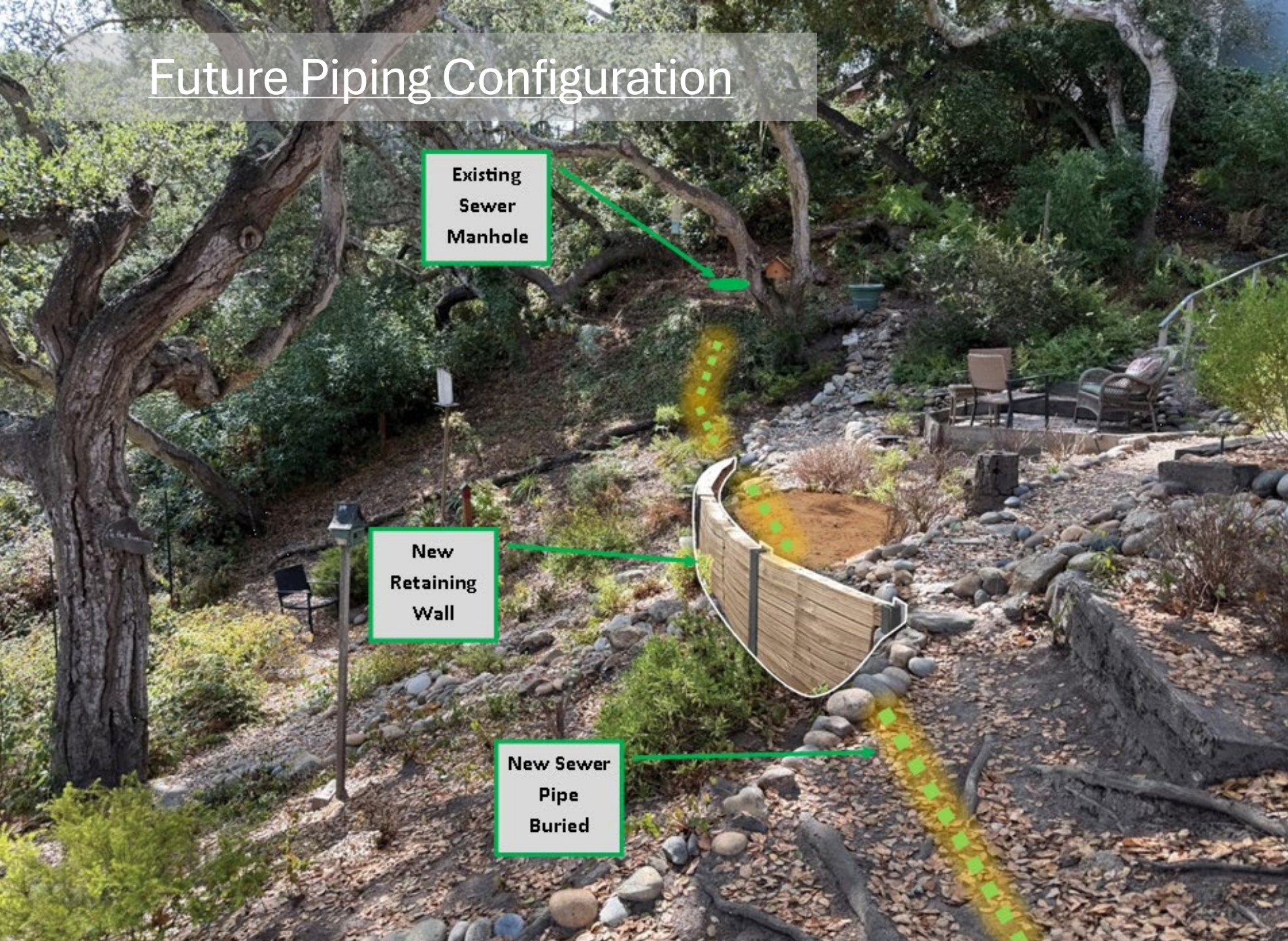


Future Piping Configuration

Existing
Sewer
Manhole

New
Retaining
Wall

New Sewer
Pipe
Buried





Long-Term Improvements

Designing a Pump Station Out of View



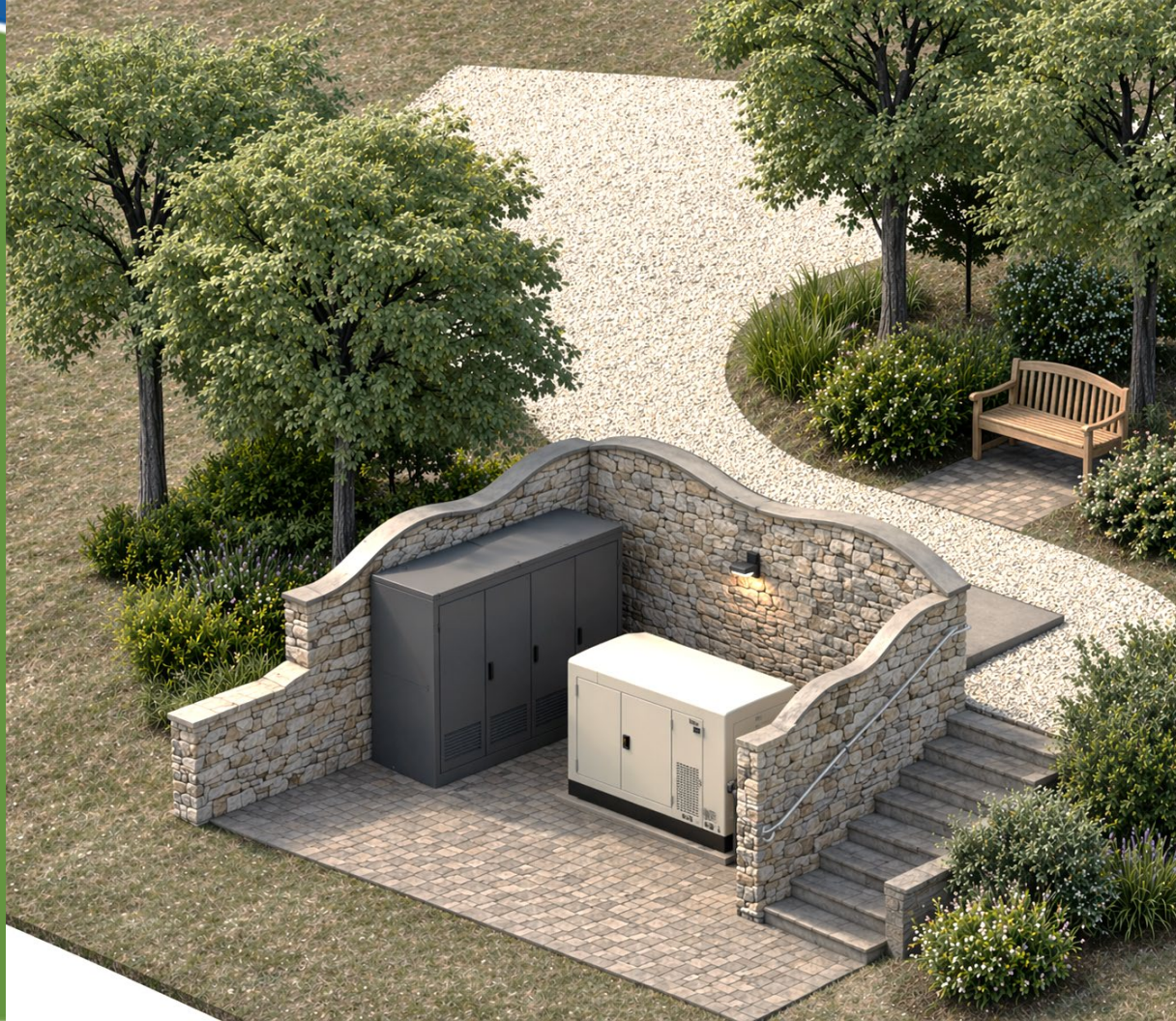


New Proposed
Location for Pump
Station



Long-Term Improvements

Designing a Pump Station Out of View



Long-Term Improvements

Designing a Pump Station Out of View



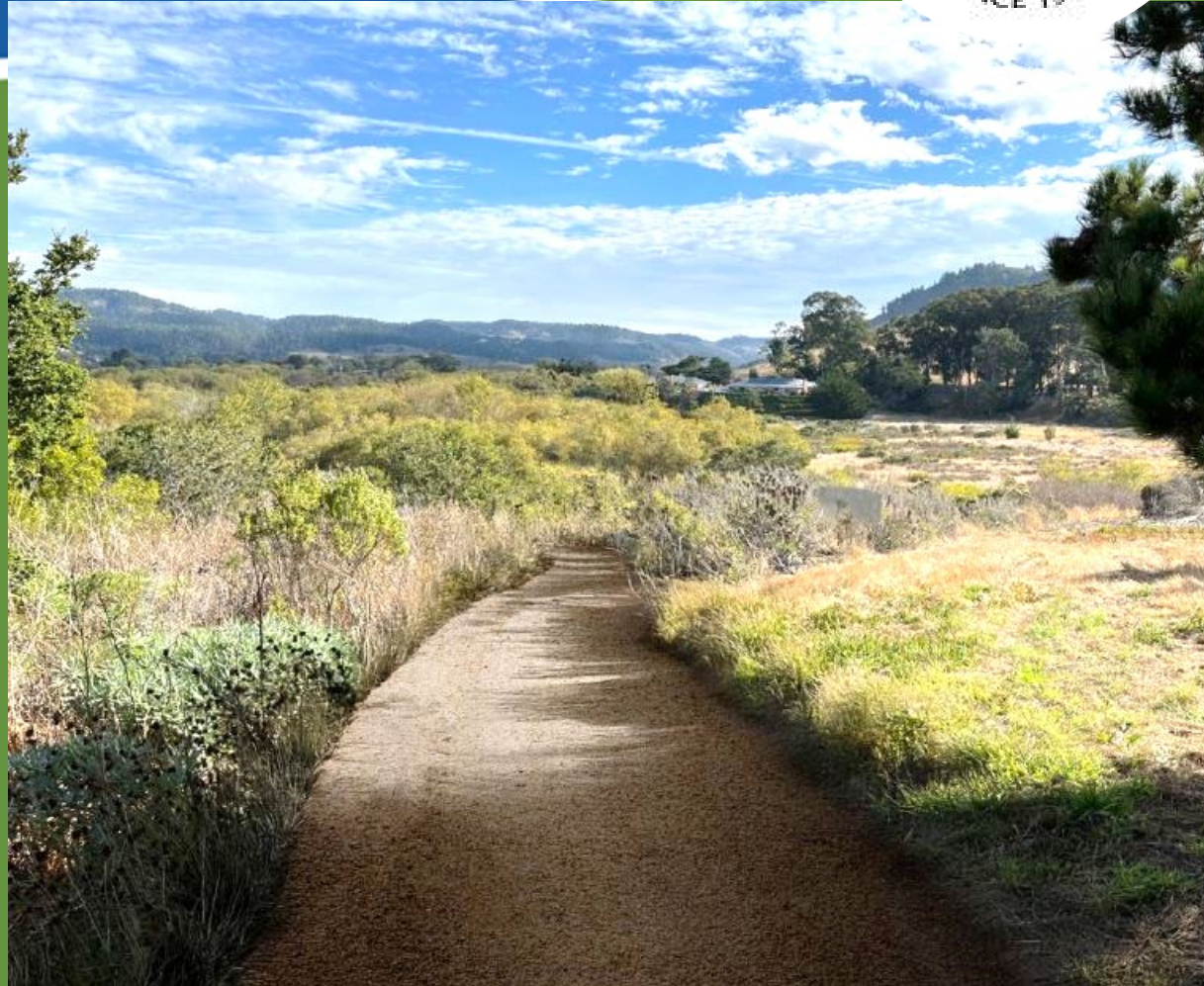
Long-Term Improvements

Designing a Pump Station Out of View



Long-Term Improvements

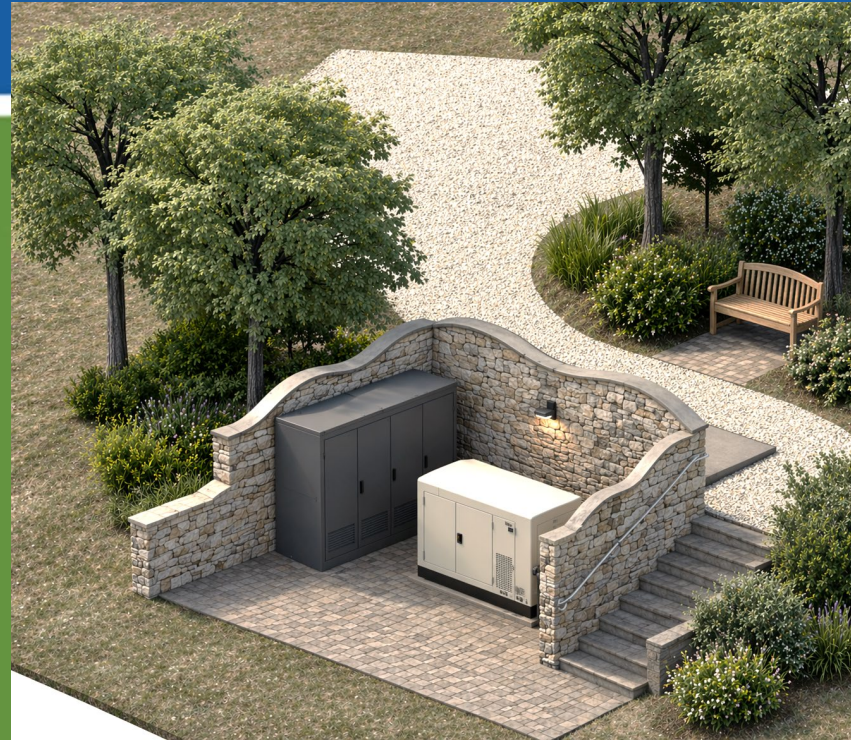
Designing a Pump Station Out of View



YOUR FEEDBACK MATTERS!



- Enhancement Ideas?
- Thoughts?
- Questions?



Take Aways



- Community support is critical to successful implementation.
- CAWD is making multiple near-term repairs necessary to maintain the system, and serve the community.
- CAWD is ready to move to the next phase of design, permitting and property acquisition for the long-term sewer reconfiguration.